



# USER MANUAL

## WI-LIGHT 2 REMOTE APPLICATION

V1.1

---

# SUMMARY



Smartphone server or Standalone connection .....	3
Start the Wi-Light 2 APP .....	6
Page description .....	7
Trigger Page.....	7
Colour and Scene control page .....	10
Channels page.....	11
Timeline page.....	12
Clock page.....	13
Settings page.....	14

## SMARTPHONE SERVER OR STANDALONE CONNECTION

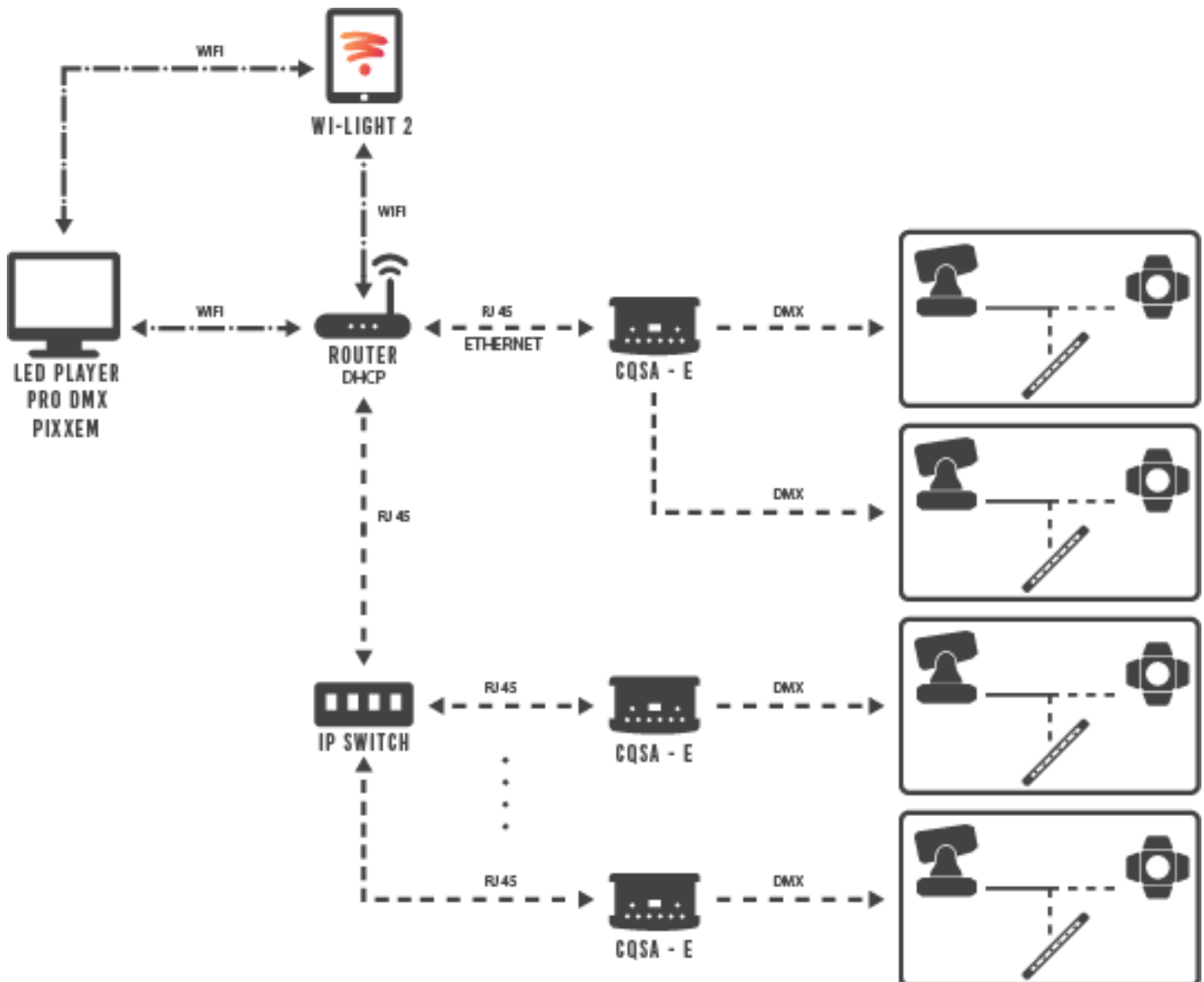
With the Wi-light 2 application, you can communicate with the software or with the standalone Ethernet interfaces.

First, connect your smartphone/tablet to the same Wifi network or Wifi access point as your computer or interface.

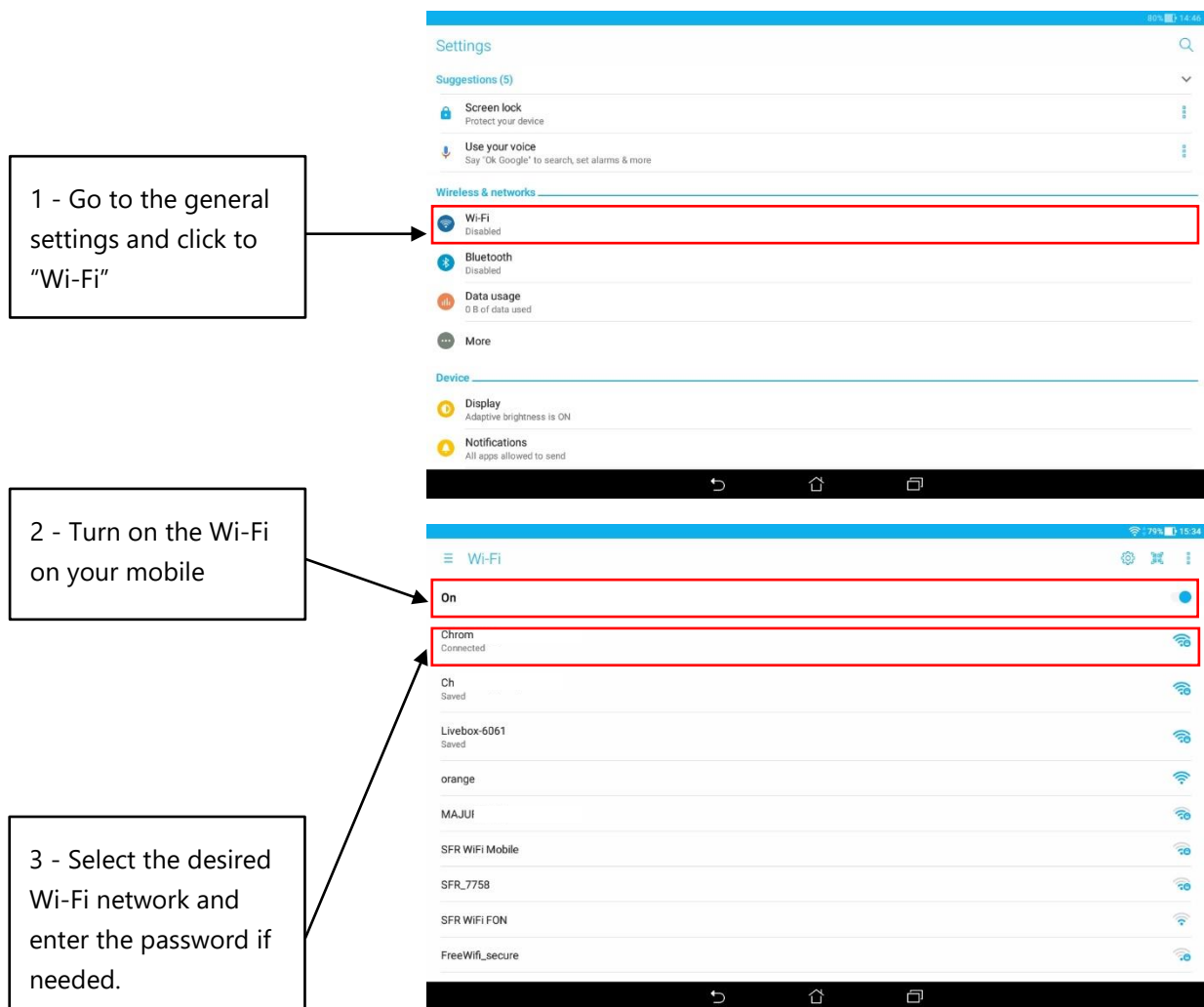
**Software Smartphone Server:** Launch the software, open the **Tools** menu and click on **Start Smartphones server**.

**Ethernet Interfaces:** When the interface is powered, hold the **Validate** button few seconds to switch in DHCP mode and be able to connect the device to the local network. "dh" is flashing on the LED display.

### GLOBAL LOCAL NETWORK CONNECTION:



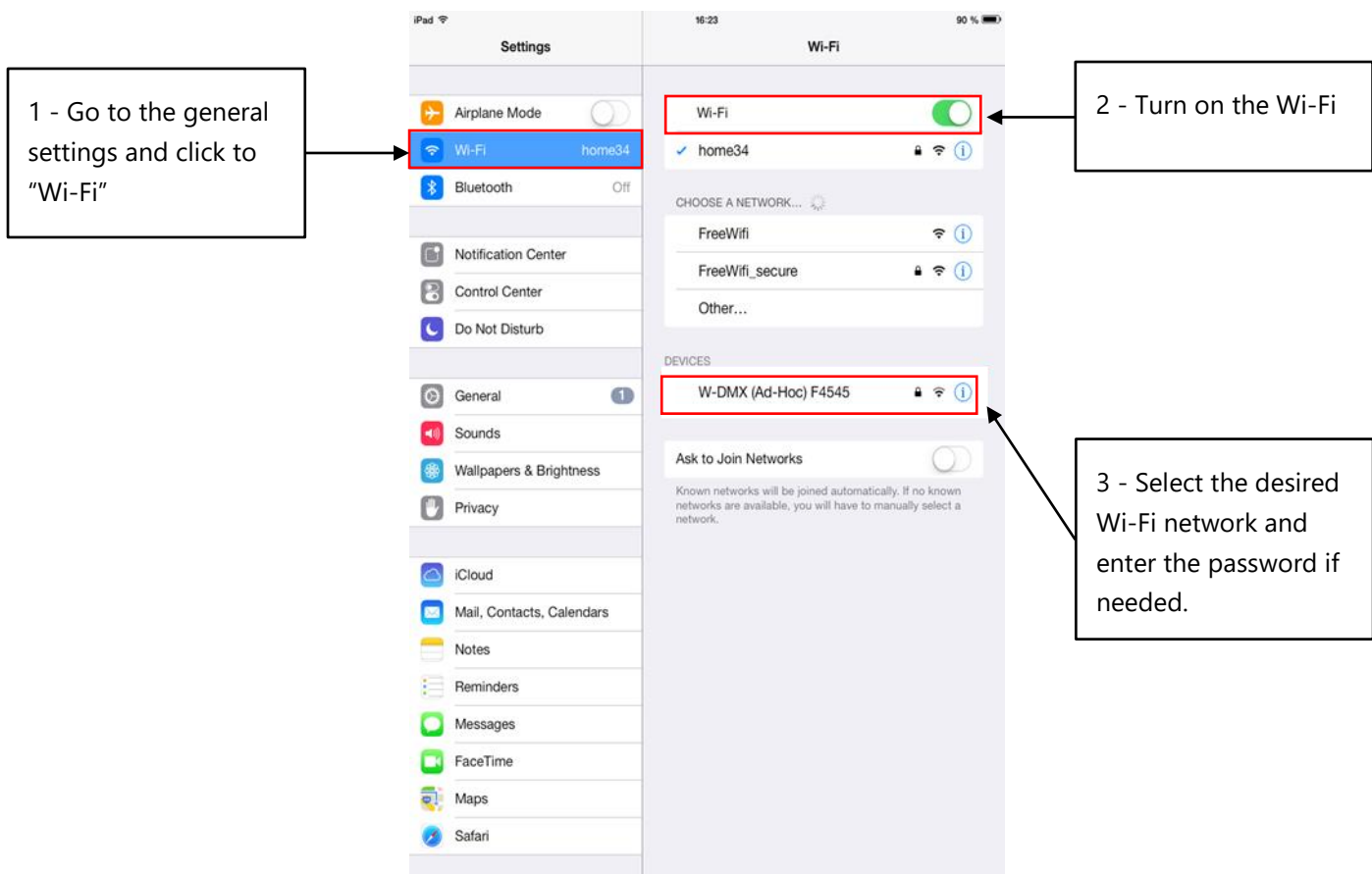
## **CONNECT ON ANDROID:**



After few seconds, you are connected to the network and you can now launch the Wi Light 2 app.

It will detect the device or software automatically and display them in the setting page.

## CONNECT ON IOS:



**Connexion on Apple devices can take a few minutes the first time.**

After few seconds, you are connected to the network and you can now launch the Wi Light 2 app.

It will detect the device or software automatically and display them in the setting page.

IP address are managed directly by the WIFI router of your access point. In DHCP the IP address are assigned automatically, but it is also possible to fix the IP address of the terminal, device and computer.

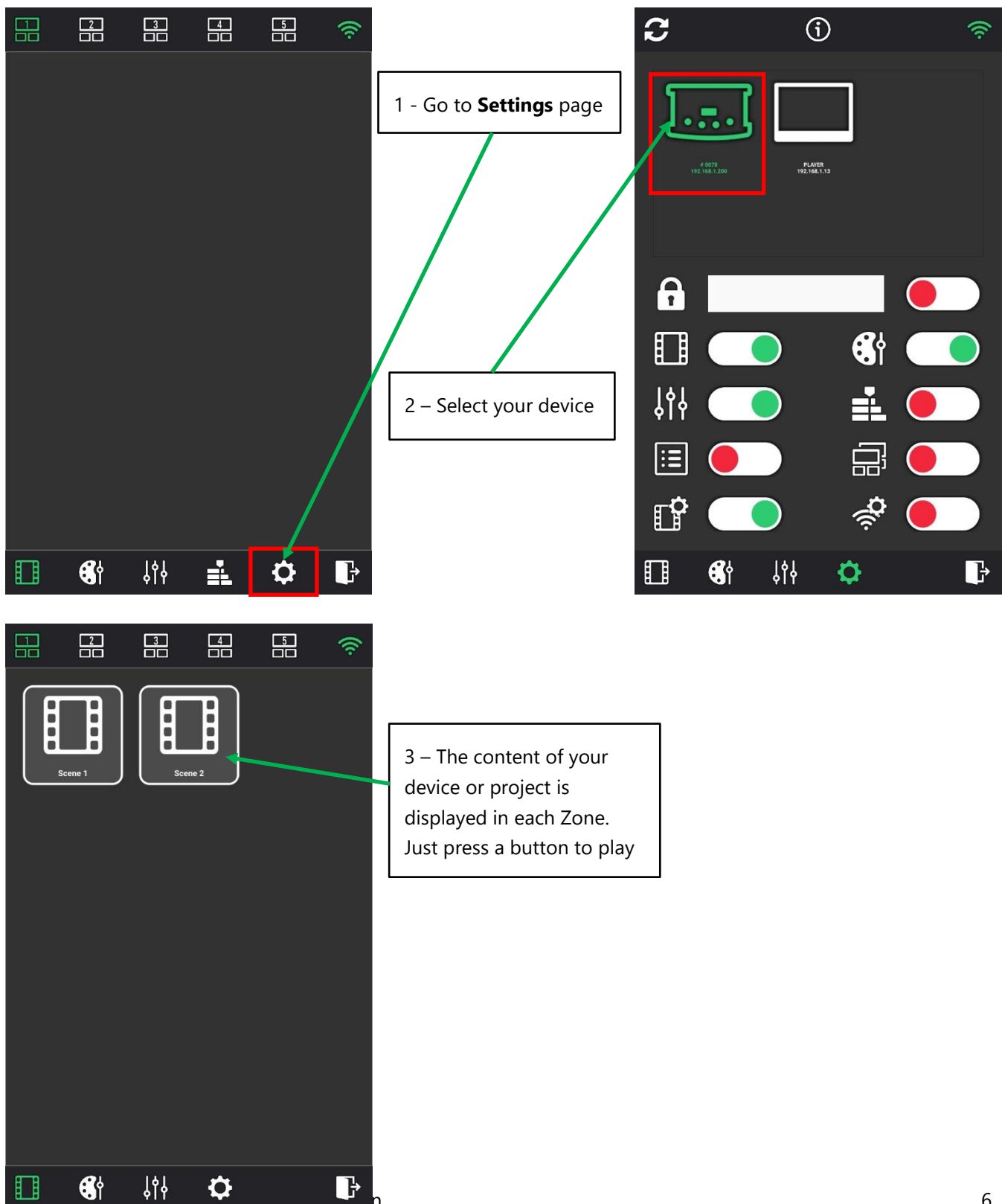
We recommend the DHCP mode for easy connections.

## START THE WI-LIGHT 2 APP

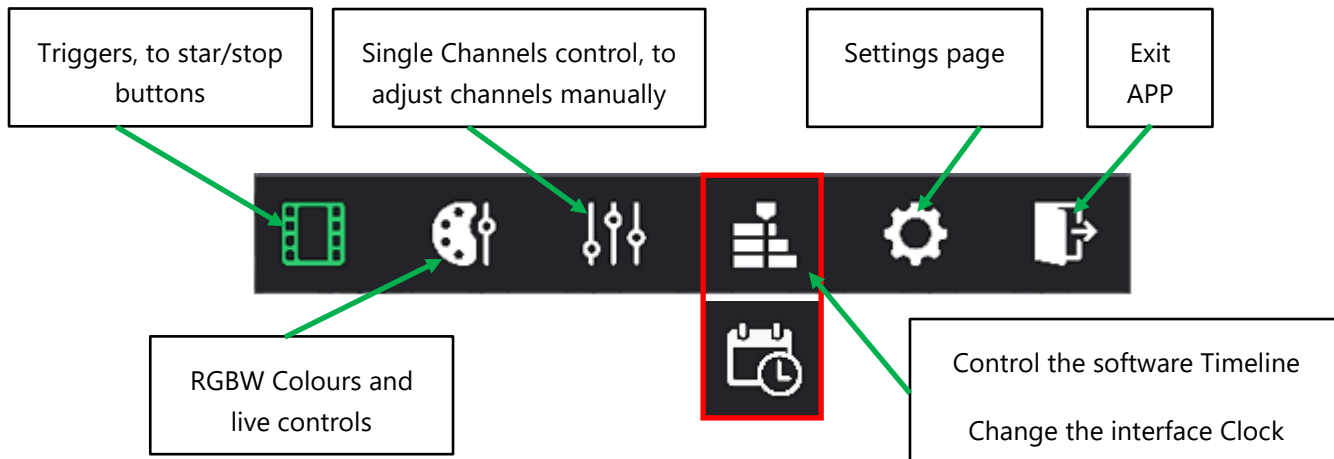
When you launch the Wi-Light 2 app, it will automatically detect the interface or smartphone server on the network where your terminal is connected. Each device detected are listed and displayed in the **Settings** page.

If several interfaces are connected to the same network, select the one you want to use.

You can select and control only 1 device per time.

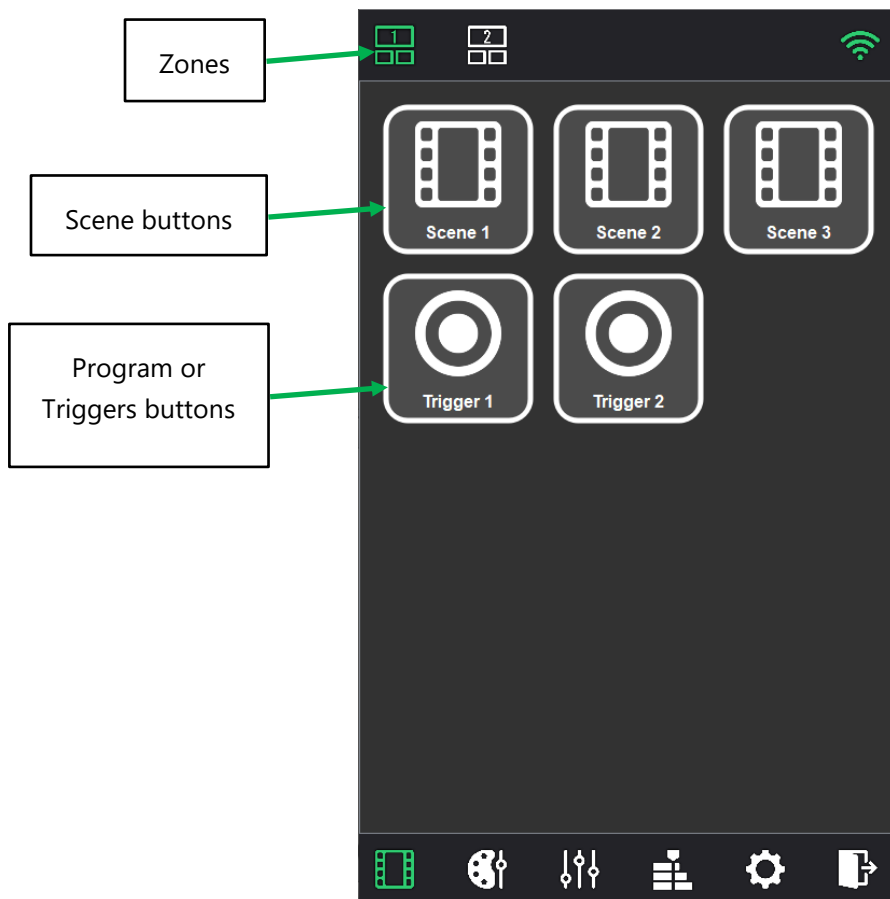


## PAGE DESCRIPTION



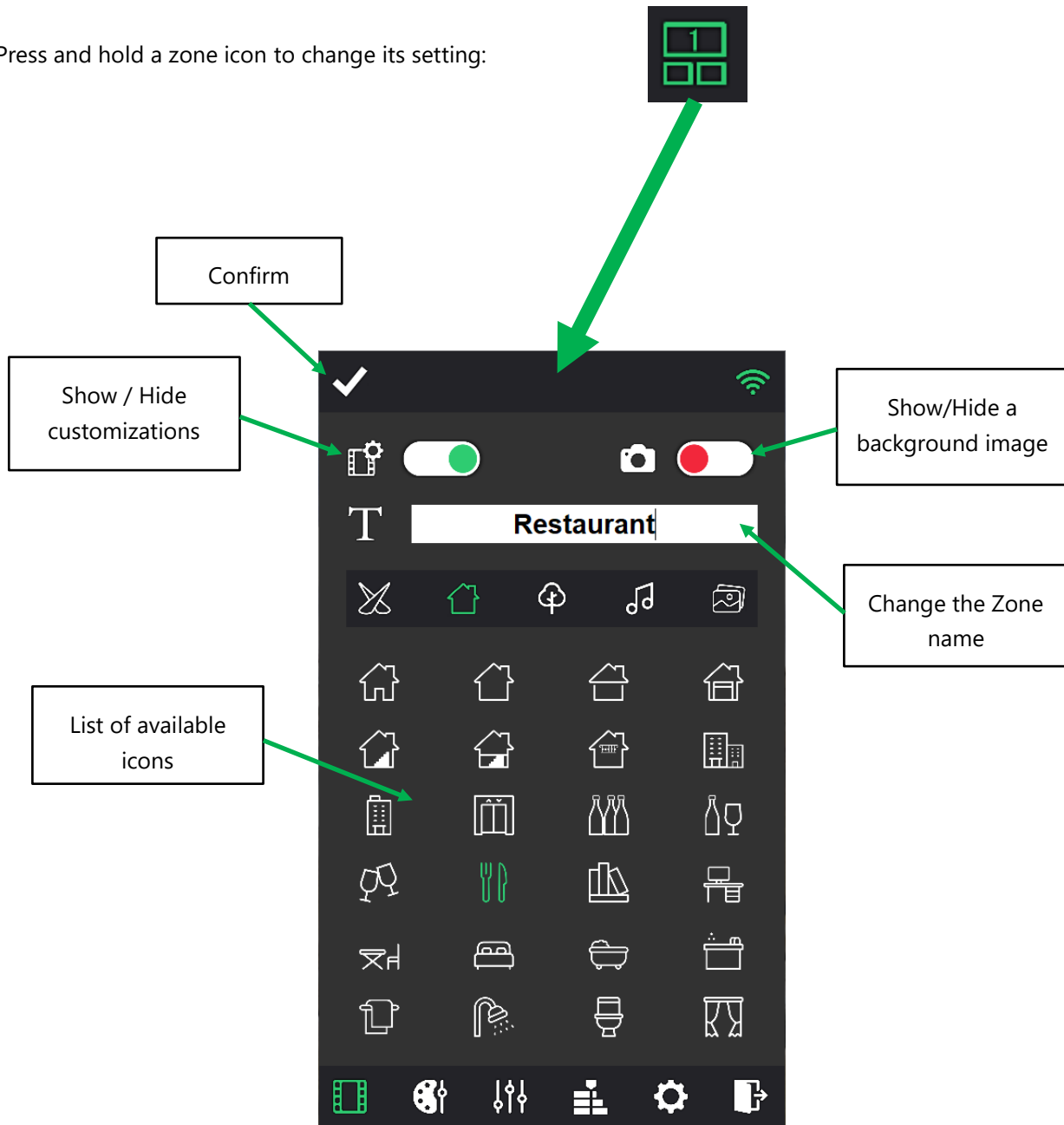
## TRIGGER PAGE

The **Triggers** page gathers all the scenes, programs and trigger buttons of the software and interfaces. It allows to trigger them instantly. If the show is multizone, some buttons are available for each zone.



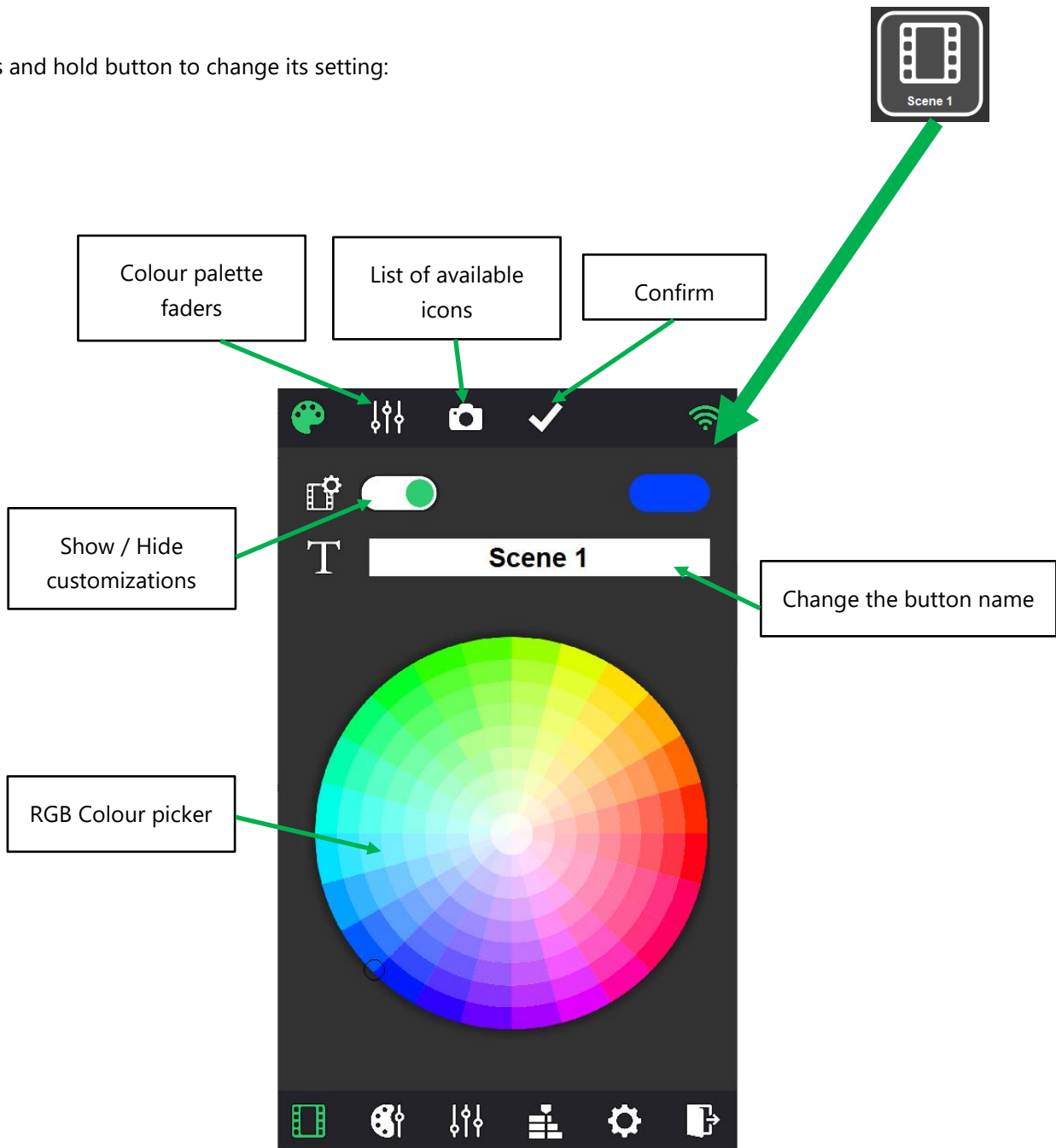
## **CUSTOMIZE THE ZONES AND BUTTONS**

Press and hold a zone icon to change its setting:



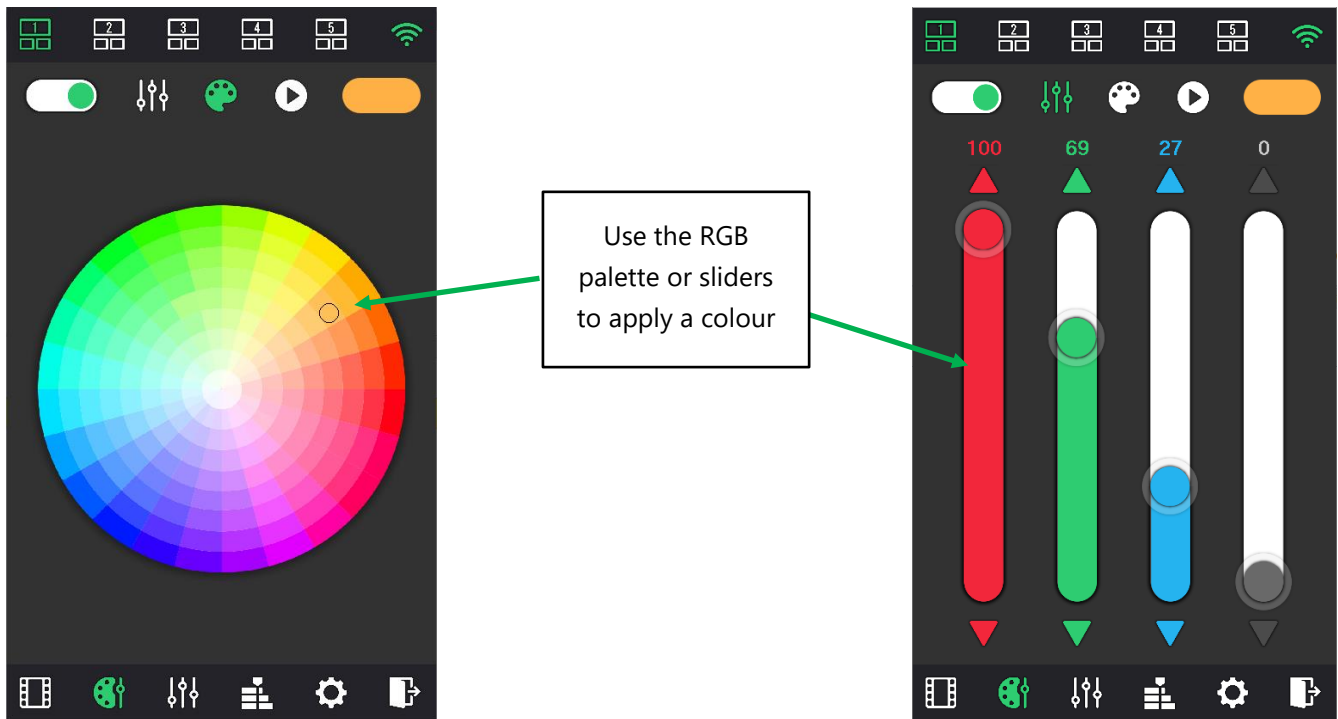


Press and hold button to change its setting:

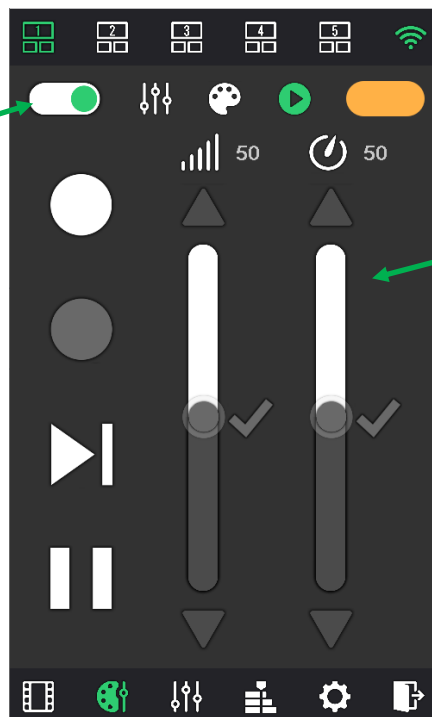


This page allows to apply a colour to the connected devices and from the current scene via the RGB palette colour picker or the RGB sliders.

It also allows to control the highlight, blackout, dimmer and speed of a scene or zone...



Click to ON/OFF to resume the current scene values and cancel the current colour



- Highlight: all fixtures turn white in maximum intensity
- Black-out: all fixtures turn off
- Next: jump to the next scene in the list
- Pause: turn current scene in pause
- Dimmer: change the fixtures light intensity of the scene in the current zone
- Speed: change the speed of the current scene

It allows to control all channels manually and individually.

Click ON/OFF to resume the current scene and cancel the changes on all the channels

Select a DMX universe from 4

Click to cancel the modification

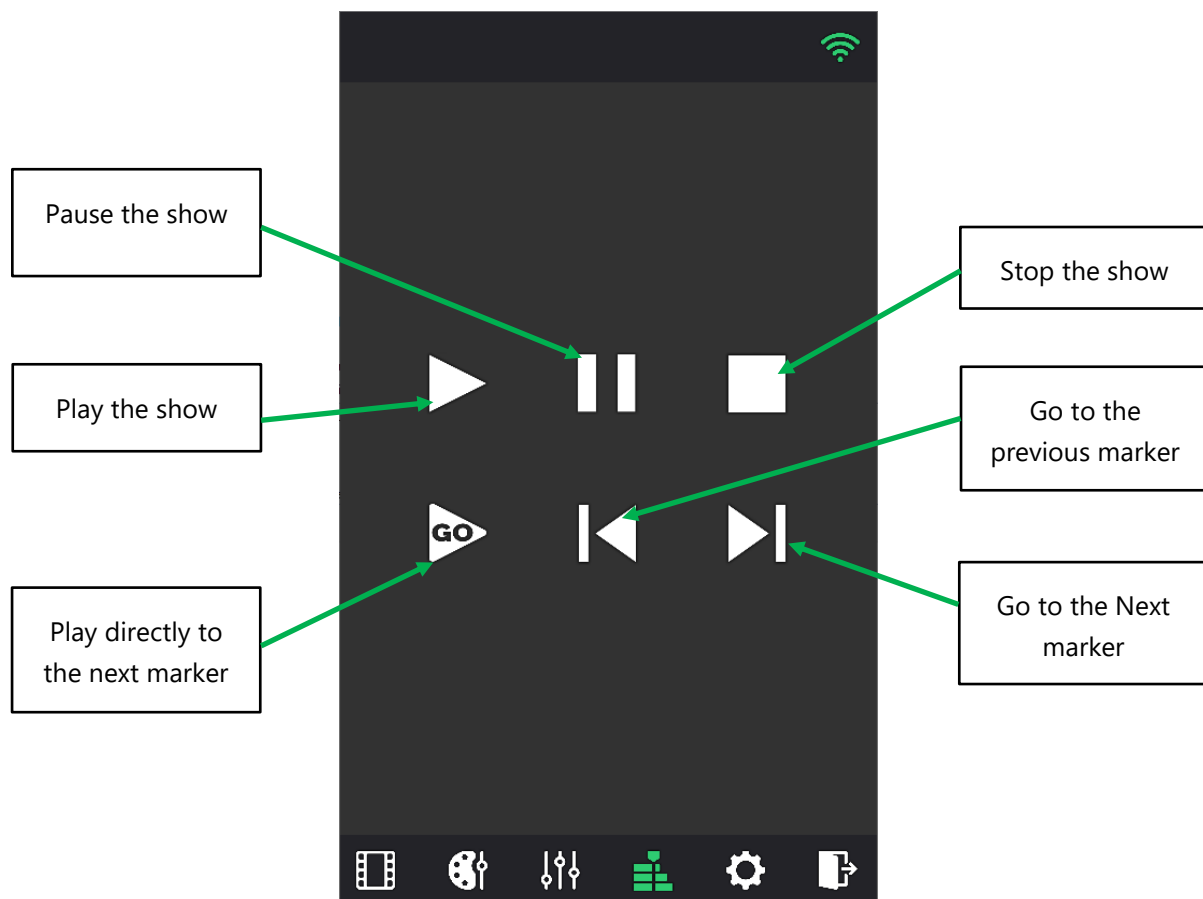
The level settings remain active until they are deactivated

Click to apply the modification

Click on the channel and set the DMX level manually

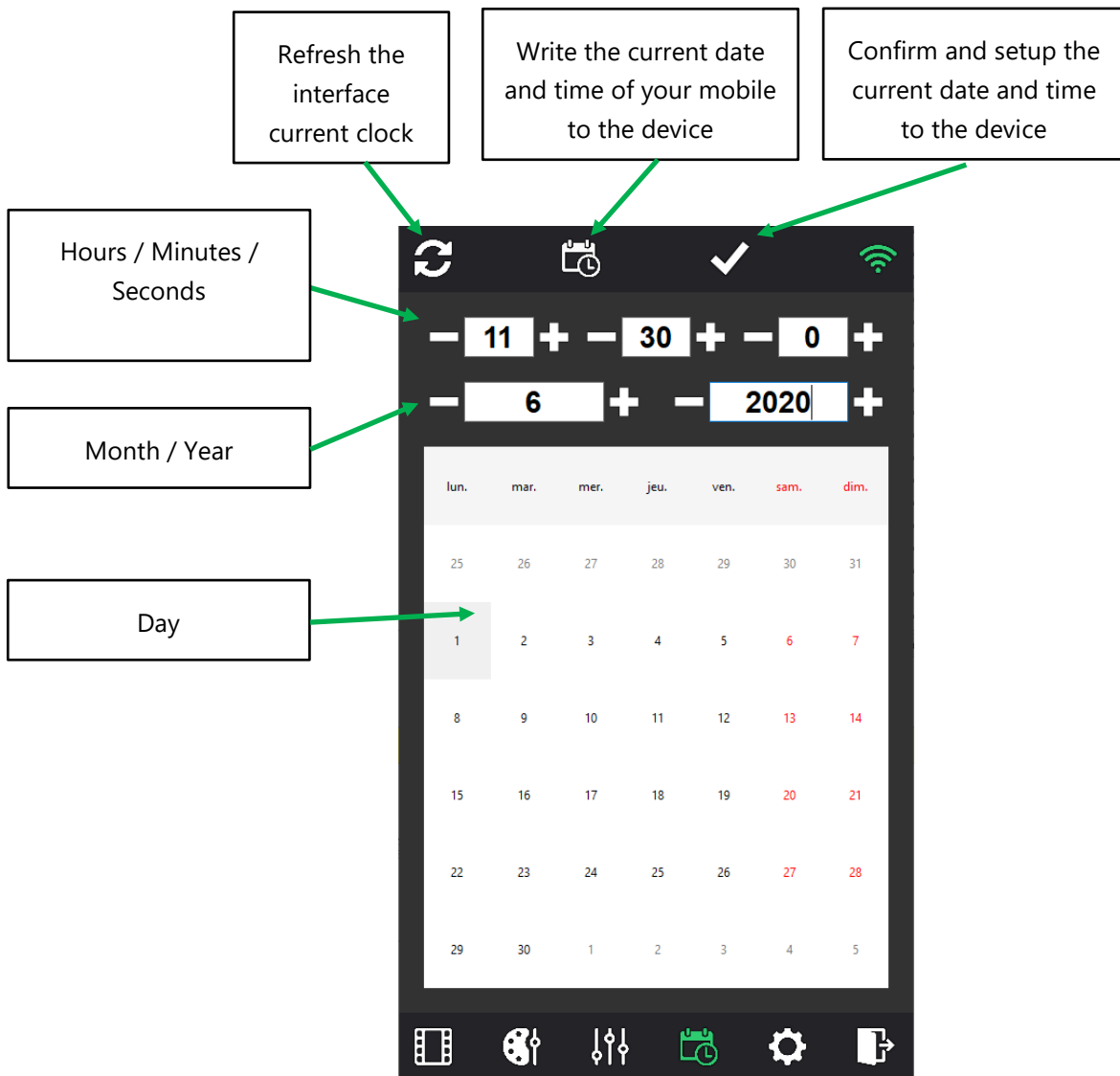
Scroll through the 32 cells to browse the 512 channels of the current universe

It allows to control the software timeline. If the show has several timeline tabs, only the current tab is controlled.

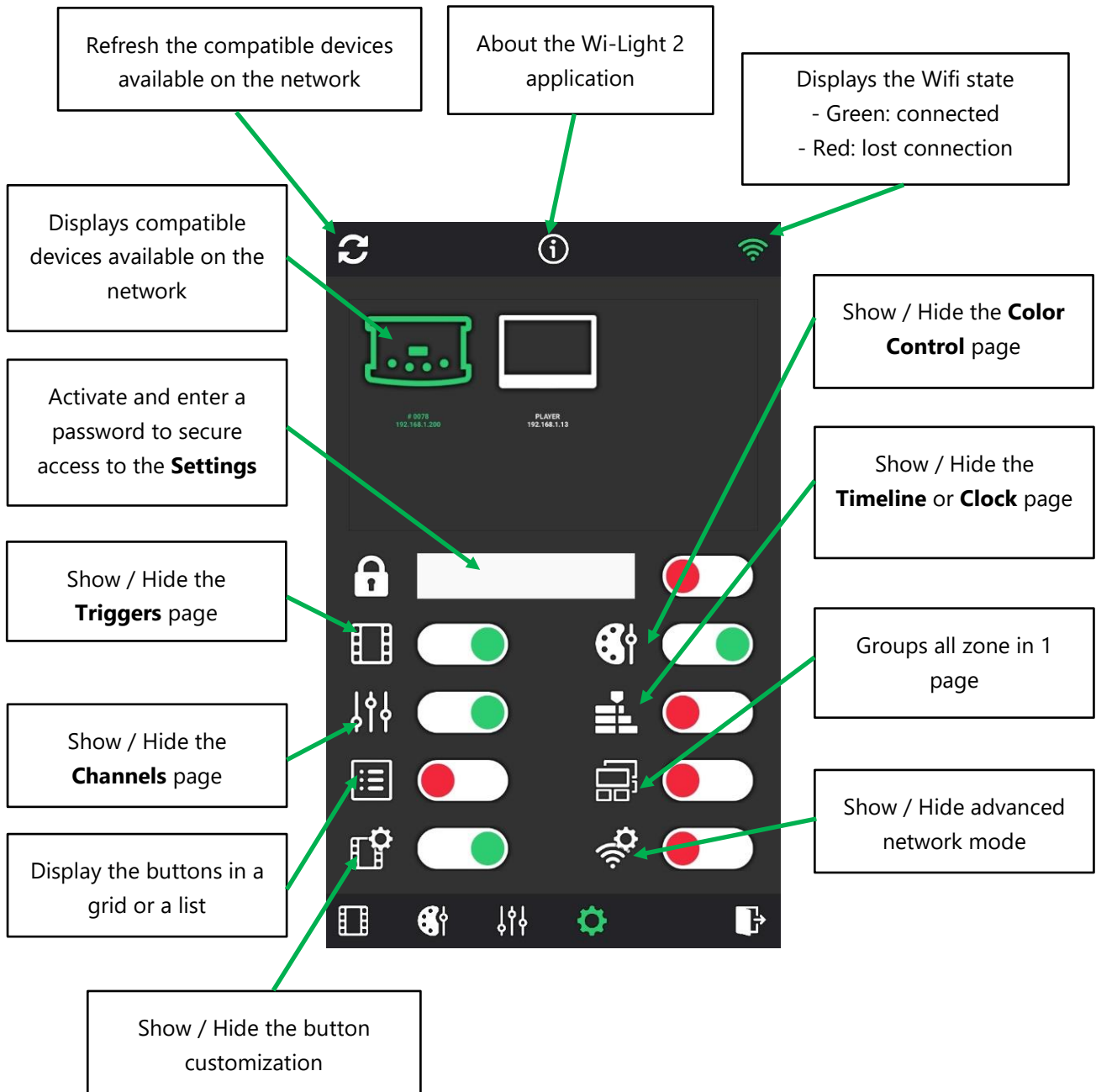


## CLOCK PAGE

It allows to setup the time and date of the selected stand-alone Ethernet interface.



It allows to enable or disable the different page and options of Wi-Light 2. It allows the selection of the device that you want to control and can be locked by a password for security and don't allow users to change the advanced settings.



## ADVANCED NETWORK MODE

It allows to choose the network card manually and set the IP of the device you want to be connected with. In normal use, you don't need to turn on this option. It is useful when using a VPN service to select the right network card or manually enter the IP address of the server to reach.

